

AES/AN-3F

miniaturized cylindrical inductive

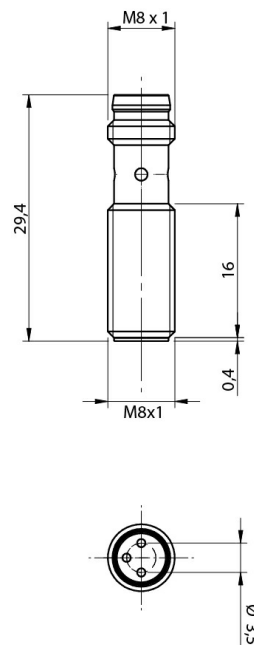


Micro Detectors

Italian Sensors Technology



Indicative image



Detection properties

| | |
|--------------------------|--|
| Nominal sensing distance | 1,5mm |
| Operanting distance | 0...1,21mm |
| Standard target | 6,5x6,5mm FE360 |
| Correction Factor | copper: 0,15 ± 10% / aluminium: 0,15 ± 10% / brass: 0,21 ± 10% / stainless steel: 0,56 ± 10% |
| Thermal drift of Sr | < 10% |
| Repeat Accuracy | 5% (UB 24V Ta=23°C ±5°C) |
| Hysteresis | 1 ... 20% |

Outputs

| | |
|---------------------|------|
| Output type | NPN |
| Output Function | NO |
| Switching frequency | 7kHz |

Electrical data

| | |
|------------------------------------|-------------------------|
| Operating Voltage | 10 - 30Vdc |
| No-Load supply current | ≤ 10mA |
| Load current | ≤ 100mA |
| Leakage current | ≤ 10μA |
| Output voltage drop | ≤ 1,5V @100mA |
| Max ripple content | ≤10% |
| LED indicators | Yellow LED output state |
| Time delay before availability | ≤ 50ms |
| Short-circuit protection | Yes (auto-reset) |
| Reverse Polarity Protection | Yes |
| Protection against inductive loads | Yes |

Mechanical data

| | |
|-----------------------|-------------------------|
| Dimensions | M8 x 1 / L = 29,4mm |
| Mounting | Shielded |
| Weight | 4g |
| Housing Material | stainless steel AISI303 |
| Connections | M8 Plug |
| Active Head Material | PBT |
| Tightening torque | 5Nm |
| Operating temperature | -25°C...+70°C |

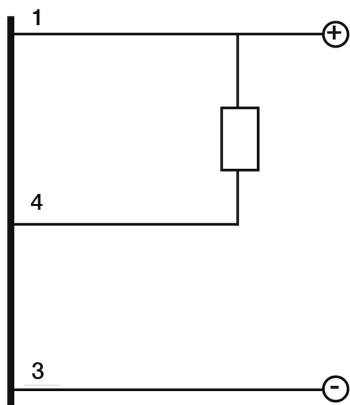
Test/Approvals

| | |
|-----------------------|--|
| Approvals | CE cULus |
| EMC compatibility | IEC 60947-5-2 |
| Shocks and vibrations | Vibration IEC 60068-2-6 / Shock IEC 60068-2-27 |
| Degree of protection | IP 67 (EN60529) |

Accessories

| | |
|----------------------|-------------|
| Supplied Accessories | 2 nuts M8x1 |
|----------------------|-------------|

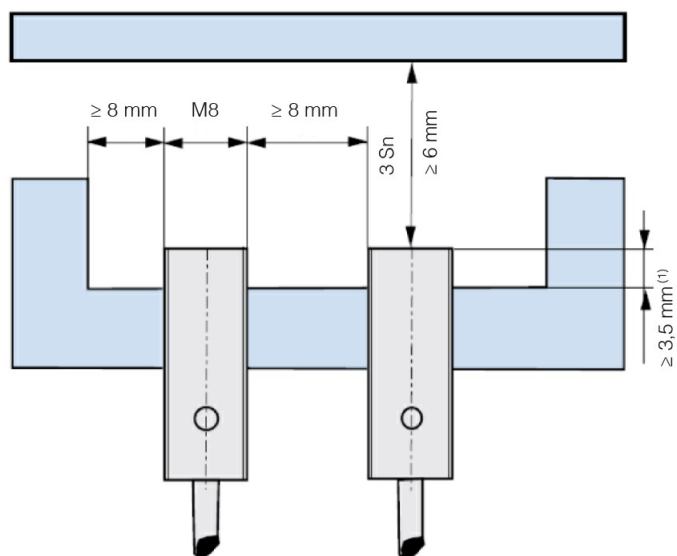
ELECTRICAL DIAGRAMS OF THE CONNECTIONS



CONNECTOR



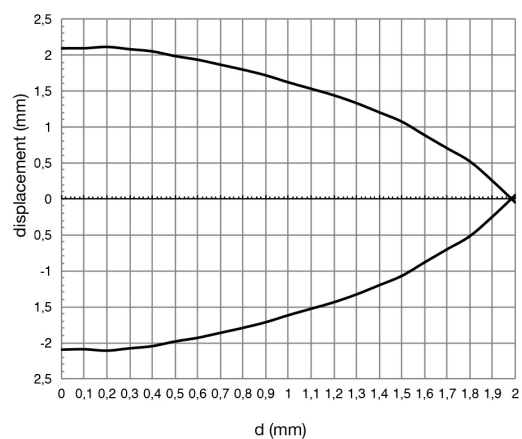
INSTALLATION



⁽¹⁾ ≥ 4 mm without ferro-magnetic material

RESPONSE CURVES

Disassamento Parallelo



M.D. Micro Detectors S.p.A.

Strada S. Caterina, 235

41122 Modena (MO)

Tel. 059 420411

Fax 059 253973

E-mail info@microdetectors.com

date of printing

04/07/2019 09:40:37