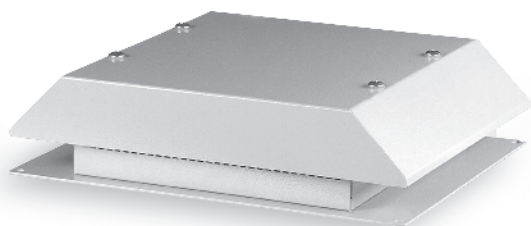


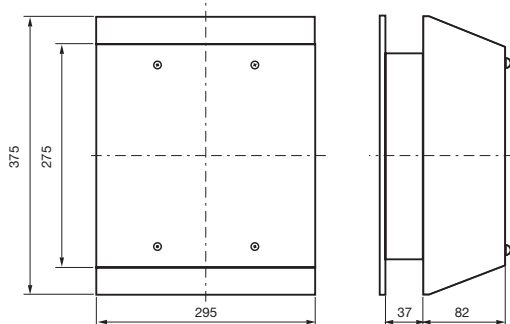
"T22" SERIES

Description: Roof Exhaust Unit

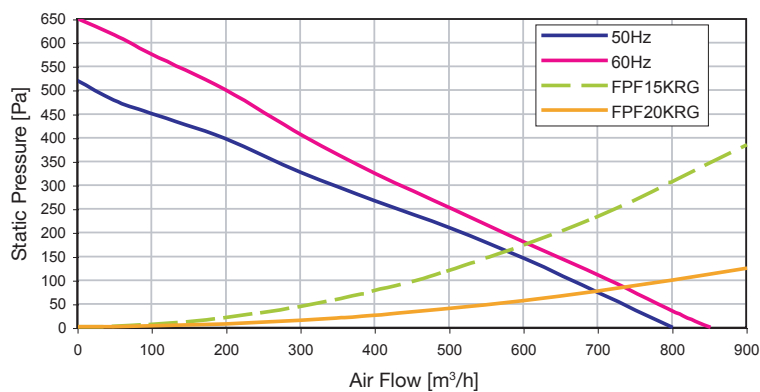
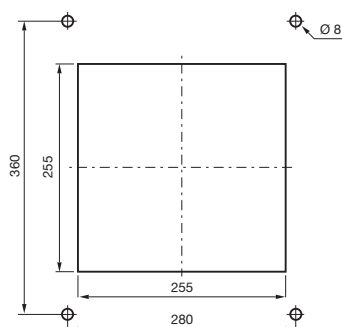


Type of material:	epoxy painted steel casing
Standard colour:	RAL 7032 and RAL 7035
Protection degree:	IP23, according to EN 60529 standard
Fixing method:	by No 4 M6 screws
Plate thickness:	every
Storage temperature:	from -20°C to +70°C
Lifetime L10 at 40°C:	50,000 h
Motor protection:	thermal
Electrical connection:	by 3 core 1.0 mm ² cable (ble, brown and y/g)
Earth connection:	by yellow/green conductor
Appliance class:	class I
Weight:	6.27 Kg
Approvals:	CE

technical drawing



mounting cut-out



Model	Voltage	Frequency	Rated Current	Rated Power	Max Air Flow (**)	Static Pressure	Noise	Rated Temp. Range
	(V)	(Hz)	(mA)	(W)	(m³/h)	(Pa)	[dB(A)]	(°C)
T22*115B	115 a.c.	50/60	1,380/1,850	150/210	800/850	520/650	70/71	-20 ~ +60
T22*230B	230 a.c.	50/60	690/930	158/213	800/850	520/650	70/71	-20 ~ +60

(*) may be R for color RAL 7032 or U for color RAL 7035 (***) data with uncertainty of 15%

All specifications, data and drawing are subject to change without notice and are approximate. Please refer to our terms of sales including our warranty and limited liabilities clauses.